



Social Business Directory

to allow suppliers to link with **social enterprises**
within the ESES City Region Deal area



Introduction

The Edinburgh & South East Scotland City Region Deal (ESES CRD) is a Scottish and UK Government investment programme aimed at accelerating growth, creating new economic opportunities and creating meaningful new jobs to help reduce inequalities.

To further the impact of the spend of the ESES CRD projects, we have created this directory to help encourage opportunities within the deal supply chains.

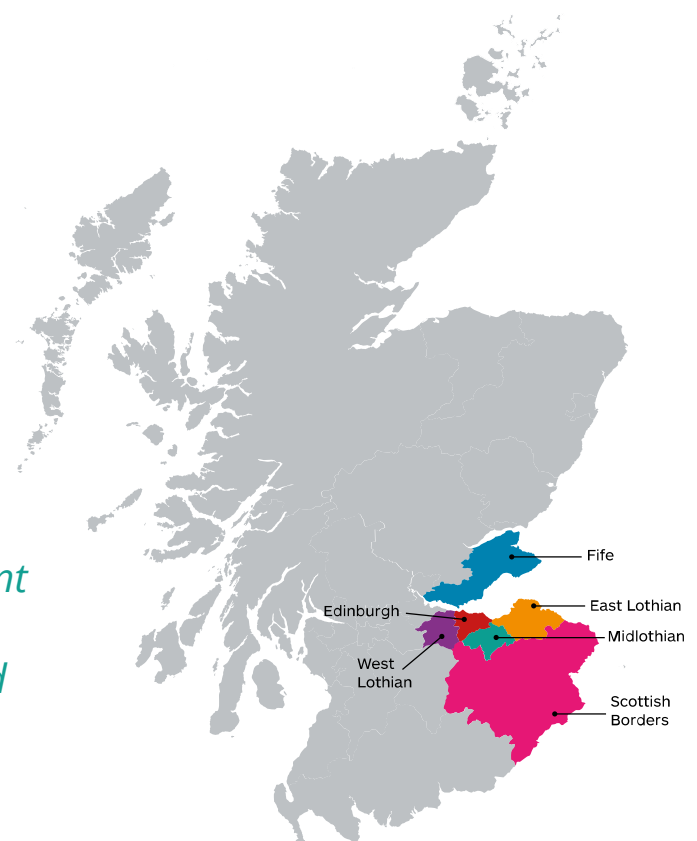
Our mission is simple: To showcase social enterprises/local organisations with an excellent social ethos from all local authority areas across our 'City Deal' region to encourage contractors to be more creative and forthcoming with presenting opportunities.

Aims:

- Drive forward the Community Wealth Building ethos and ensure spending stays in the local area by linking contractors with social enterprises and socially minded organisations.
- Make contractors aware of the organisations and services available in our region, particularly if the contractor is from outside the area.
- Develop more resilient supply chains within the ESES CRD by encouraging more opportunities for local social enterprises to work with deal contractors.

*If you would like to find about more
Community Wealth Building visit
<https://cwb.esescommunities.org/>*

*We will aim to keep this directory current
by refreshing twice a year, so if you
would like your business to be included
in the next edition contact:
info@esescommunities.org*



EDINBURGH
SOCIAL
ENTERPRISE
NETWORK



Edinburgh Social Enterprise Network

What is a social enterprise?

Social Enterprise is an ethical and sustainable way of doing business that has a positive impact and benefit on society.

Social Enterprises reinvest their profits into their social or environmental aims and some may also achieve their aims by the way in which they run their business, such as training and employment opportunities.

In Scotland, a business is recognised as a social enterprise when it complies with the Code, this means that 100% of profits are reinvested into the business or go to a community in need.

Enabling Change

When buying from a social enterprise you are supporting local businesses and the communities they represent. Social Enterprises are driven by a passion to improve the world we live in. Whether an individual's cause is rooted in their community, focused on removing barriers to employment or seeking to tackle key environmental issues, collectively this determination to shape and change life and the economy is as inspirational as it is powerful. Social Enterprise not only delivers inclusive economic growth, it engenders a successful, vibrant democracy.

Scotland's social enterprise sector is part of a global effort towards social change, one that recognises the need for a radically better way of organising the economy for the benefit of all.

The Good Stuff Community Edinburgh

Operated by Edinburgh Social Enterprise Network, The Good Stuff Community is a meeting place for social enterprises, 'socially enterprising' businesses and anchor institutions such as universities, the NHS and the council who have come together to do good things in Edinburgh.

This is the place to access all things social enterprise across the city and to connect through the online marketplace, in-person networking events or via matchmaking from the expert team. The Good Stuff Community helps make community wealth building happen.

“

The best way to build the capacity of social enterprises is through trading with them and creating new market opportunities. As social enterprises provide much needed support to local communities, by trading with them you are also helping support those most in need across the city.



By joining The Good Stuff Community you can 'do good stuff' and help make Edinburgh better for everyone. ”

Emma Galloway,
Edinburgh Social Enterprise Network Chair

**EDINBURGH
SOCIAL
ENTERPRISE
NETWORK**



Organisation Name	Status	
Art and Spirituality CIC	CIC	  
Charteris Centre	SCIO	  
Coin-Operated Press CIC	CIC	   
Communication Inclusion People	CIC	 
Duncan Place	SCIO	 
Eat, Sleep, Ride	CIC	 
Edinburgh Community Food	Social Enterprise and Charity	  
Edinburgh Open Workshop	Social Enterprise	
Edinburgh Printmakers	Non-Profit-Distributing Company with Charitable Status	   
Edinburgh Remakery	Social Enterprise	  
Edinburgh Social Enterprise Network	Charity	
Frangipane Bakery	Social Enterprise	
Graphics Co-op Ltd	A Workers Coop	  
Grassmarket Community Project & Coffee Saints	Social Enterprise	  
Hike & Bike Hub	Social Enterprise	
Institute of Occupational Medicine	Research Charity	  
Into Work	Charity	
Little Living Room	Social Enterprise	    
McSence	Community Business, Social Enterprise and Registered Charity	
Media Education	CIC	 
MHScot Workplace Wellbeing CIC	CIC	 
Move On Wood Recycling	Social Enterprise and Charity	
Norton Park SCIO	SCIO	  

People Know How	SCIO	
Scran Academy	Social Enterprise	 
Social Print and Copy	Social Enterprise	  
Spark Creations	Social Enterprise	
The Edinburgh Collective C.I.C.	CIC	   
The Melting Pot	Non-Profit Organisation	  
The Mindful Enterprise	CIC	  
The Salisbury Centre	SCIO	
Venturing Out CIC	CIC	   
Welcome Brain Consulting	Consulting Firm (whose mission is to help organisations embrace neurodiversity)	  

 Building	 Bike Hire/ Active Travel	 Training	 Filmmaking
 Team Building	 Research	 Health & Safety	 Leadership
 Recycling	 Catering	 Human Communication	 Document Management
 Office Space	 Events Space	 Venue Hire	 Public Engagement
 Marketing	 Graphic Design	 Branded Merchandise	 Business support
 Copywriting & Copy Editing	 Tech & IT Peripherals	 Mental Health	 Corporate Activities
 Mindfulness	 Therapy/ Counselling	 Mobile Catering	 Printing
 Food Distribution	 Publishing	 Branding	 Display Systems

MOVE ON WOOD RECYCLING

Move On Wood Recycling

Category: Recycling, Re-use Organisation

Who: Move On Wood Recycling

Where: Edinburgh and the Lothians



What: Move On Wood Recycling (MOWR) collects waste wood, which would otherwise end up in landfill, to be sold as quality timber and upcycled wooden products. We offer an alternative waste wood collection service across Edinburgh and the Lothians, collecting from small businesses and residential properties, right up to large construction sites on behalf of national and multinational building companies.

Why: Our model is cost effective for customers and offers local businesses the opportunity to dispose of their wood waste in an environmentally responsible manner, maximising recycling and re-use opportunities. We help reduce the use of virgin timber (and the energy and pollution associated with processing, importing and distributing it) and reduce CO2 emissions. Collecting and preparing the wood for resale also provides meaningful volunteering, work experience and (paid) training opportunities for people with a range of additional needs, particularly disadvantaged young people.

Previous clients include Robertson Group, BAM, Wates, Tilbury Douglas Construction, Bowmer + Kirkland, National Galleries of Scotland, University of Edinburgh, Assembly Festival and Underbelly Edinburgh.

How: craig@moveon.org.uk



Scran Academy

Category: Catering

Who: Scran Academy

Where: Edinburgh-wide

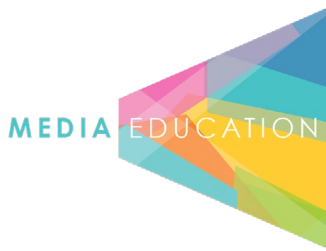


What: We can cater for many types of events, from office lunches to large-scale staff wellbeing events, using our famous food truck, the Scran Van.

Why: Scran Academy is a catering social enterprise on a mission to see every young person, regardless of background or barrier, realise their full potential in learning, work and life. Too many young people in our most challenged communities never realise their talents or aspirations due to the effects of social inequality and poverty. Scran Academy exists to change that. Using our unique youth-led catering social enterprise, we provide critical work experience for young people, building confidence and providing them with skills needed to direct their own futures.

Previous clients include NHS Lothian, Edinburgh University, the Edinburgh International Festival and the Trams to Newhaven Project.

How: To book, get in touch at hello@scranacademy.com



Media Education

Category: Community Engagement, Filmmaking, Participatory Arts, Research and Service Design

Who: Media Education

Where: UK-wide but predominantly, Scotland.



What: We work with individuals, communities and organisations using storytelling and filmmaking to explore the issues that affect people's daily lives. Together, we produce films and stories presenting people's experiences. We then target these messages to audiences who can influence changes in policy or service. The films are also shown at community screenings alongside facilitated discussions. This might be to increase understanding between specific groups in a community or encourage collaboration between all stakeholders to find possible solutions to a problem or issue.

Why: We help organisations engage with communities on different aspects of their work within the area. We are a cooperative, non-hierarchical organisation with equal pay and decision making across our team. This structure is deliberate to mirror the way we want to work with our partners and people on our projects. We believe that all experience should be valued and if we pool this together, we can achieve surprising results.

Previous clients include NHS Greater Glasgow and Clyde, Historic Environment Scotland, Scottish Prison Service, Carers Trust, National Galleries of Scotland, National Museum Scotland and many more.

How: kate@mediaeducation.co.uk



Charteris Centre

Category: Event Space, Venue Hire, Office Space

Who: Charteris Centre

Where: Southside but serving Edinburgh and the rest of the world



What: Two halls, two meeting rooms, 13 offices and coworking space, which provide a base and support for social enterprises, charities, community groups and local businesses gathering around interests and issues that include equality, diversity, mental and physical health, faith, culture and the arts, education, local community interests and more.

We have spaces to suit events of all shapes and sizes, from small group training days to conferences of up to 120 delegates and private parties, concerts and ceilidhs. Our Social Enterprise Hub offers 20 desks with flexible rental options just 15 minutes' walk from Waverley Station.

Why: Part of the mission outreach of Greyfriars Kirk, the Greyfriars Charteris Centre is a place for community, connection and wellbeing. We seek to provide a warm welcome, serve people of all cultures, faiths and self-expression, and support initiatives promoting the care and wellbeing of individuals, communities and the environment.

Previous clients include Just the Tonic, Scottish Love in Action, Edinburgh Social Enterprise, Edinburgh Street Pastors, and the University of Edinburgh.

How: info@charteriscentre.com

Edinburgh Printmakers

Edinburgh Printmakers

Category: Events Space, Venue Hire, Public Engagement, Catering, Team Building Activities and Opportunities to Engage and Support the Arts (includes commissioning artwork, purchasing artwork, sponsoring an exhibition, event or other activity, supporting fundraising activities)

Who: edinburghprintmakers.co.uk

Where: Based in Fountainbridge in Edinburgh but with audiences locally, nationally and internationally



What: Edinburgh Printmakers is a creative centre for printmaking and the visual arts. Our multi-faceted space has a large, light-filled printmaking studio, two galleries, a shop stocked with original prints and handmade gifts, versatile venue spaces, a welcoming café, and a community garden. Conveniently located just a 10-minute stroll from Haymarket station or 15 minutes from Princes Street, we offer versatile spaces for corporate hires, networking events, conferences, workshops, talks, receptions, and private celebrations.

Why: Collaborating with Edinburgh Printmakers also means embracing the visual arts and their impact on individuals and communities. We offer team-building printmaking workshops, opportunities to commission artwork with our Studio Team, and the chance to support our community engagement initiatives by sponsoring exhibitions or events. Our core vision is to uphold an open-access ethos, inviting everyone to get involved and enjoy our inspiring environment and create a better world through printmaking and the arts.

Previous clients include Edinburgh Festivals, Skyscanner, the University of Edinburgh and the Edinburgh Chamber of Commerce. Notable past sponsors include the Consul General of India in Edinburgh, Vastint and StayCity Aparthotels.

How: info@edinburghprintmakers.co.uk



little living room

Little Living Room

Category: Marketing, Graphic Design, Branding, Website Design, Business Support, 1:1 Consulting, Copywriting, Copy Editing

Who: little living room

Where: Based in Fife and Edinburgh (operating across Scotland)



What: Marketing, graphic design, branding, website design, business support, 1:1 consulting, copywriting, copy editing.

Why: little living room is a women and queer-led social enterprise founded in 2020 by artist Rebecca Gallacher. We are dedicated to supporting career growth by creating skills development opportunities for those facing obstacles in pursuing creative careers. We support independent artists and creatives through our series of panels, networking events, and bi-annual publications.

We also offer affordable help to sole traders and conscious businesses - developing eye-catching designs, creating bespoke packages to suit your needs and helping you to communicate with customers and clients to achieve your goals. Whether it is branding, graphic design, copywriting or editing, we can help. You can't do everything, sometimes you need someone to offer a hand. Our team offers bespoke design and business support to conscious businesses at affordable rates.

We will have a chat and tailor what we offer you based on your business needs!

How: becca@littlilivingroom.co.uk



Edinburgh Remakery

Category: Reuse, Refurbishment and Responsible Recycling of Tech and IT Peripherals, Public/Community Engagement Talks & Workshops for Repair and Reuse (Tech and Textiles)

Who: Edinburgh Remakery

Where: All of Scotland



What: Edinburgh Remakery is a social enterprise and charity based in Edinburgh. We aim to reduce waste by providing repair and reuse services and training to communities and businesses. We are experts in tech disposal, repair, and reuse services, and keeping electronic components out of landfills and in use for longer. Our ISO27001 accreditation ensures that data is securely managed and protected every step of the way. We have a thriving tech repair and refurbishment department that specialises in dealing with electronic waste. We offer a friendly, professional, ethical, and cost-effective service.

Why: To reduce digital poverty, we gift 20% of tech refurbished through your contract to a community/charity of your choice. With a well-established online shop and through our eBay Shop, we sell refurbished tech at affordable prices so people can access technology. We provide Volunteering Opportunities, introducing people to the skills required to embrace and promote a circular economy. We can provide a Tech Donation Box to be placed in a community location: people can donate their personal end-of-life tech. This diverts it from landfills and causes behaviour change around environmental sustainability while providing us with more Tech gifting opportunities for those facing digital poverty.

Clients include Baillie Gifford, University of Edinburgh, Scottish Government, Softcat, People's Postcode Lottery and Edinburgh International Conference Centre.

How: hello@edinburghremakery.org.uk



Scotland's Charity Supplier of Photocopiers and Printers

Social Print & Copy

Category: Printing, Scanning and Document Management Solutions

Who: Social Print & Copy

Where: Based in Edinburgh and Glasgow but serving all of Scotland



What: Our range of managed solutions includes printers and multi-functional devices at fair and transparent pricing. We understand that businesses change over time, so we don't tie you into lengthy 5-year contracts. If your business needs change, we can change the device to suit your processes and ensure that you get the best value for your investment.

We offer a secure scanning bureau service to help you convert paper documents into digital format. We can provide you with cloud solutions that accompany the scanning service, ensuring that your documents are accessible from anywhere and anytime. Our in-house print bureau can cater to all your printing needs, from business cards to flyers, banners, and more. We use the latest printing technology and high-quality materials to ensure your prints look professional and stand out.

Why: Social Print and Copy CIC is a Social Enterprise that provides excellent managed solutions and creates employment opportunities for young people who face barriers to work. We are a member of the Scottish Government's Supported Business DPS and both Living Wage and Living Hours accredited.

Current and Previous clients include Stirling Council, Fife Housing and Pennykid Insurance Brokers.

How: info@socialprintandcopy.org



The Mindful Enterprise

Category: Mental Health, Resilience, Mindfulness, Therapy/Counselling

Who: The Mindful Enterprise

Where: Edinburgh (and Central Belt) and Scotland wide (online services)



What: We offer a range of in-person and digital services to improve mental health and increase human potential, and we use our profits to make well-being services more accessible to those in disadvantaged circumstances. We serve individual consumers, communities, workplaces and schools through training courses, seminars, retreats and 1:2:1 therapy/counselling/coaching. We aim to increase the well-being of 10,000 people in Scotland by 2025 and 30,000 by 2030.

Why: We believe that every human being, regardless of age or background, is of equal value and should have access to information and services to help them thrive and realise their innate potential. By empowering people with the tools to self-manage their wellbeing and how they show up each day, we can reduce strain on public health services, strengthen families and create more vibrant and connected communities and workplaces.

Previous clients include Lloyds Bank, Heineken, Bauer Media Group, Crown Office & Procurator Fiscal, Microsoft, Audit Scotland, People's Postcode Lottery, Bank of New York Mellon, The University of Edinburgh, Law Society of Scotland, Free Agent, Oil and Gas Authority, Bruce Stevenson Insurance.

How: info@themindfulenterprise.org



Art and Spirituality CIC

Category: Venue Hire, Events Space, Mental Health Therapies and Classes

Who: Art and Spirituality CIC

Where: South West Edinburgh based but serving all of Scotland



What: We are a creative and wellness community centre with a beautiful studio, cosy therapy room and cafe near Haymarket Station and 5 minutes from Saughton Park. We offer activities such as art workshops, exhibitions, therapies, yoga, meditation, sound baths, reiki, coaching, stress management, breathwork and more. Our spaces are also available to be hired for rehearsals and meetings. Our large studio can accommodate up to 25 yoga mats/ 30 chairs. There is free on street parking.

Why: We are a small social enterprise led by an ethnic minority but open to all; we are here to find healing, inspiration, self-expression and nourishment. Our mission is to improve people's mental, emotional and physical health, increase social connections, promote local artists and provide support in a non-judgmental environment. We encourage people's inner journey to understand who they are and how to heal themselves and others.

Previous clients include Edinburgh Napier University, Thrive Edinburgh, Health All Round, The Welcoming, Four Square, Gorgie Collective, Capitol Students Westfield, Beltane Earthpoint, University of Salford and many private clients.

How: info@artandspirituality.co.uk



Coin-Operated Press CIC

Category: Zine-Making, Creative Workshop Facilitation, Arts, Publishing

Who: Coin-Operated Press CIC

Where: Mainly Edinburgh, but happy to travel across Scotland



What: We are an artist-led social enterprise. We collaborate with organisations and can make a collaborative zine with you, develop your project into a zine commission, put on a zine fair in your venue, host a zine-making party for you, run a team-building zine-making workshop, curate an exhibition with you, publish your zines, or any other wonderful idea you have!

NOTE: A zine is a booklet-style artwork that you make yourself.

Why: We value intersectional feminist culture, and we work frequently with the LGBTQ + community and those with chronic illnesses, neurodiversity, and disabilities. Zine culture is all about diversity, and we welcome people of all genders, sexualities, ages, races, abilities, and backgrounds to get involved. We strive to be as sustainable and environmentally friendly as possible in our practice and events. We believe everybody is an artist, and all our participants need are the right tools and a little encouragement to have their voices heard.

Previous clients include The National Library of Scotland, The University of Dundee, Fife Council, The University of Edinburgh, and many more.

How: coinoperatedpress@gmail.com



Communication Inclusion People

Category: Human Communication Inside and Outside your Business / Public Engagement

Who: Communication Inclusion People

Where: East Lothian, Edinburgh, Fife, Midlothian, Scottish Borders, and West Lothian



What: We help organisations develop the assets and good practice they need to engage everyone in a community - in whichever way people prefer or need to communicate. Our experienced team are all experts in human communication -

- 5 speech and language therapists with in-depth knowledge of how people communicate, how to improve it and what to do if it breaks down.
- 12 co-producers who communicate in diverse ways. They know what organisations can do to reach more diverse communities.

Why:

- Reach more people from more diverse communities,
- Apply equality and human rights laws better,
- Save time and the costs of communication breakdown.

Previous clients include:

- Public Health Scotland / Our Place; Social Research Association; Planning Aid Scotland; Edinburgh Health and Social Care Partnership; NHS Education Scotland; Scottish Government

Visit our recent work: [Communication Inclusion People for testimonials and updates](#)

How: Contact us in the way you find easiest, see our website for fully inclusive options.



Duncan Place Community Hub

Category: Meeting Rooms / Event Space

Who: Duncan Place Community Hub

Where: Leith, Edinburgh



What: We provide affordable office space for several charities. We also have two fantastic and fully accessible rooms available on an hourly basis for meetings, training, classes, groupwork & events. The rooms are named Wee Duncan and Big Duncan and are maintained to an excellent standard with lots of natural light, air source heating, air conditioning, black out blinds, projector screen, whiteboards, urns, tables, and chairs. The fully accessible rooms are on the ground floor, and the building has ramp access. An accessible loo is also available on the ground floor. See the website for full room details.

Why: Duncan Place Community Hub is a registered charity with a sustainable business model that provides a high-quality, affordable venue and a warm welcome. The funds we raise are used to provide free and low cost community activities that increase wellbeing and reduce social isolation.

Previous clients include the Scottish Malt Whisky Society, the City of Edinburgh Council, the University of Edinburgh, The Royal Literary Fund, Turning Point Scotland and many more!

How: info@duncanplace.org



Edinburgh Community Food

Category: Food Sales and Distribution; Nutrition and Health Training

Who: Edinburgh Community Food

Where: City of Edinburgh



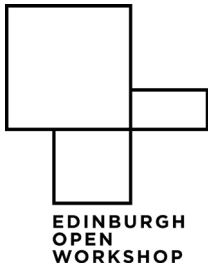
What: We are a social enterprise selling best quality food produce. We source locally where possible supporting local growers and producers. We sell and distribute fruit and vegetable boxes and baskets to homes and offices across the city. We also have a range of delicious DIY Take & Make kits containing pre-measured ingredients along with easy-to-follow nutritionist-developed recipe cards. Edinburgh Community food is also an accredited REHIS training provider, offering a range of nutrition and food hygiene courses.

All purchases support community work and initiatives to reduce health inequalities across Edinburgh.

Why: We're unique in Edinburgh because as well as offering quality, fresh produce and training, every purchase is reinvested for the benefit of the community. We also have an in-house team of Associate Nutritionists available for food and nutrition advice and queries to our clients. We're the healthiest way to help people in Edinburgh.

Previous clients include the City of Edinburgh Council, the Scottish Government, NHS Lothian, and many more.

How: kmiller@edinburghcommunityfood.org.uk



Edinburgh Open Workshop

Category: Fabrication & Build Space

Who: Edinburgh Open Workshop

Where: Edinburgh, and the whole of Scotland



Where: Edinburgh, and the whole of Scotland

What: Edinburgh Open Workshop is an open-access maker space offering a fully equipped workshop for wood, metal, paint, and textiles for people at all skill levels. Our structured education program caters to seasoned makers, newcomers, and everyone in between. Our scholarship initiative ensures that financial constraints are not an obstacle to learning. 'Made' is our commission-based design and fabrication service. We can assist with any element in the design and build of your project, from material preparation to digital cutting services and full custom commissions. We can streamline your project completion, saving you time and hassle.

Why: The Made service is a cost-effective way for customers to outsource part or all of their fabrication needs. Commissions are undertaken collaboratively between staff and the professional maker member body. We work with other like minded, local businesses to ensure that waste material is disposed of in an environmentally responsible way. Revenue generated from Made supports our educational and scholarship strands.

Previous clients include Stag & Doe Weddings (laser etchings), First Stage Studios (CNC and laser commissions and scenic construction), Oca Architects, Oliver Brown Architects (laser cutting model components) and many more.

How: hello@edinburghopenworkshop.co.uk



Graphics Co-op Ltd

Category: Graphic Design, Printing, Display System

Who: Graphics Co-op Ltd

Where: Scotland & UK-wide



What: We provide a graphic design service to a wide variety of organisations, large and small. We can handle the printing, too, making us a one-stop shop.

Why: We're experts at publication design with over 30 years of experience. Our clients are mostly voluntary organisations, public sector bodies and educational institutions. We can design and produce your printed and display materials economically, quickly, and with minimal fuss.

See our website www.graphics.coop for some examples of our work.

Previous clients include Energy Saving Trust, the British Red Cross, The Poverty Alliance, the University of Edinburgh, and Victim Support Scotland.

How: info@graphics.coop



Institute of Occupational Medicine

Category: Health and Safety, Research, Laboratory, Training

Who: Edinburgh Open Workshop

Where: UK wide with research projects across the globe



Where: UK wide with research projects across the globe

What: IOM is a research not-for-profit. We solve problems around workplace health and hazards. Working with health and safety managers, facilities managers, lawyers, occupational hygienists, and governments we deliver safer working environments. Understanding future threats and supporting clients as the workplace evolves.

Our services include testing hazards in our UKAS-accredited laboratory, training programmes, expert witness services, and authorising engineers. This is complemented by research capabilities which deliver science and insight to guide governments and private organisations.

Lastly, our occupational hygiene and ventilation engineers sample and measure common hazards, including noise, dust, mould, hand-arm vibration, air quality, formaldehyde, thermal exposure, welding fume, metalworking fluid, local exhaust ventilation and animal allergens.

Why: IOM offers impartial expert advice and guidance, which keeps staff safe, companies compliant and employees more productive. IOM is driven to protect and improve health through the workplace. Our research is influencing legislation across the UK and EU. We are striving for Net Zero and are supporting our local communities.

Previous clients include NHS Trusts, HSE, AECOM, Croft Occupational Hygiene Limited, Imperial College London.

How: info@iom-world.org



Into Work

Category: Training; EDI; Accessibility

Who: Into Work

Where: Edinburgh, Lothians, central Scotland (in-person or online); Scotland-wide (online)



What: Into Work training equips employers and teams to understand the diverse capabilities and skillsets of neurodivergent people, and to build confidence in recruiting, retaining, and promoting neurodivergent staff. In addition to regular 'Autism Works!' and 'Neurodiversity Works!' open courses, we offer bespoke training and support to diverse employers. We deliver training online and in-person.

Why: Co-developed with our Autism Advisory Group and delivered by skilled neurodivergent trainers, our training stands out for having lived experience at its core. Alongside delivering training, our trainers have substantial experience working in different sectors. Typical feedback - "the use of specific examples... is what made this training stand out from simply 'helpful' to very very informative, where I actually have a much deeper understanding of the issues surrounding autism in the workplace and how to best support autistic employees." (Course participant).

Previous clients include Scottish Government, NHS Lothian, Local Authorities, Intercontinental, FreeAgent and many more.

How: training@intowork.org.uk



McSence

Category: Training

Who: McSence

Where: Scottish Borders, Edinburgh and the Lothians but also Scotland wide



What: We are a social enterprising group of businesses one of which is a training company. We deliver high class and bespoke training across a range of subjects but particularly within health and social care and health and safety.

Why: Training may seem much of a muchness but we pride ourselves on being competitively priced whilst delivering excellent value. All our trainers have considerable experience within the health and social care and third sectors which we bring to our training, ensuring it is relevant and meets the brief. We can work with you to develop training specific to your requirements, or you may find our “oven-ready” training fits your requirements. Our trainers utilise various methods to deliver and embed the training, and we consistently receive good feedback from our satisfied learners who feel engaged and involved in the sessions.

Previous clients include the City of Edinburgh Council (we deliver manual handling to all departments from roads to care), West, East and Midlothian Council, Scottish Borders Council (we deliver first aid to all departments) and many more.

How: hayley.arnold@mcsence.co.uk



MHScot Workplace Wellbeing CIC

Category: Mental Health Training and Education

Who: MHScot Workplace Wellbeing CIC

Where: We cover the whole of Scotland and the rest of the UK



Where: We cover the whole of Scotland and the rest of the UK

What: Our mission is to transform workplaces into havens of compassion and care. We empower organisations by developing cultures that prioritise mental health and wellbeing. Through our comprehensive online education, training, and awareness programs, we equip employees with essential skills and knowledge, enabling them to foster a supportive environment that champions mental health and wellbeing at every level.

Why: We don't just provide education; we partner with organisations to weave empathy and understanding into the fabric of workplace environments. We excel in creating a learning experience that resonates with specific workplace dynamics. With a proven track record of enhancing workplace wellbeing, our innovative online programs are not just educational but transformational. By choosing us, you're not just investing in services, you are investing in a sustainable, compassionate future for your company, where mental health and wellbeing are at the forefront of your success.

Previous clients include Phoenix Group, The University of Edinburgh, CALA Homes, Whyte & Mackay Ltd, West Dunbartonshire Council and many more.

How: hello@mentalhealthscot.land



NORTON PARK

Norton Park SCIO

Category: Meeting Room Hire/Office Accommodation

Who: Norton Park SCIO

Where: Edinburgh/Lothians/Scotland



What: Norton Park Centre comprises shared offices and a modern, fully accessible conference, meeting and event space housed in beautiful historic buildings near the centre of Edinburgh. Our rooms are perfect for large conferences and training events, small meetings and a whole host of innovative uses and functions.

Why: Norton Park provides high quality, affordable office accommodation and workspace for the voluntary sector in Edinburgh. It houses 20 charities and has enabled the sharing of experiences and resources between different charities, helping to foster a synergy of approach and action as well as increase social, environmental and community benefits in the local area.

Our conference centre is owned by a charity Norton Park on a not for profit basis. All income is re-invested back into running the business centre for the benefit of the tenants and community. It is an ideal venue for companies concerned with their social corporate responsibilities.

Previous clients include Cyrenians, Edinburgh Health and Social Care Partnership, Scottish Government, NHS, Penumbra, Samaritans.

How: reception@nortonpark.org



The Melting Pot

Category: Coworking Space, Venue Hire, Accelerator, Social Impact and Innovation Consultant

Who: The Melting Pot

Where: Based in Edinburgh, covering all of Scotland



What: The Melting Pot is Scotland's Centre for Social Innovation. We are experts in operating a coworking space (15 Calton Road) which is designed to maximise social impact and foster connections between people with ideas for change. Our Good Ideas accelerator, consultancy arm and coworking space is the ideal place for change-makers at all stages of their development.

Why: We can help you with space, expanding your network and achieving social impact. **SPACE:** The Melting Pot has a central and versatile coworking space which provides users with a place to create, discuss ideas and achieve their goals. **NETWORK:** Our membership community is diverse and provides opportunity for collaboration across Scotland. Attendees of our events leave with a renewed sense of purpose, carefully facilitated by the expertise and connectivity of our hosts and staff team. **SOCIAL IMPACT:** Our cohort-based accelerator, Good Ideas, takes those with an idea - regardless of purpose or stage - on a supported journey of product and service development. Follow our social media to watch as our consultancy offering develops to share expertise on setting up an organisation, managing coworking and implementing hybrid working practices.

How: sam@themeltingpotedinburgh.org.uk



The Salisbury Centre

Category: Community Centre,
Venue Hire, Event Space

Who: The Salisbury Centre

Where: Based in the South-East of
Edinburgh in Newington serving
Edinburgh and the rest of the World



What: We're a vibrant Community Centre located in the southeastern part of Edinburgh, founded in 1973. We offer rooms available to hire and a vibrant community program. We have two larger spaces, a library space, two therapy rooms, a Firepit and Garden. Our facilities cater to a diverse range of activities such as training courses, yoga, pilates, meditation, art sessions, meetings, therapy sessions, dinners, concerts, weddings, and more. All users of the Centre have access to a fully-equipped kitchen, complete with tea, coffee, and oat milk. Our community program features events and workshops with free/donation-based or sliding scale pricing, as well as opportunities for volunteering.

Why: The Salisbury Centre was founded on principles of creativity, spirituality, psychological development and believes in promoting inclusive spaces and ecological consciousness and sustainability. The Centre offers a place for community connections, reduced social isolation, nature connection, and space to improve wellbeing. The Centre welcomes people from all cultures, backgrounds, and from all faiths or none, promoting inclusivity and eco-consciousness.

We are LGBT-friendly and Breastfeeding Friendly. We aim to provide a warm and welcoming environment for all individuals.

Previous clients include the University of Edinburgh,
The Climate Festival & Edinburgh Social Enterprise.

How: office@salisburycentre.org



Venturing Out CIC

Category: Mental Health, Events,
Resilience (building resilience of
workplace teams and other groups of
people, young or old), Team Building,
Workplace Wellbeing, Employee
Wellbeing

Who: Venturing Out CIC

Where: Edinburgh & the Lothians.



What: We are a not for profit, Outdoor Activities Provider offering a wide range of adventurous activities. We can support people to experience the health and wellbeing benefits of participating in outdoor activities. We offer fun, engaging experiences, using the outdoors as a medium for developing stronger, positive mental health. We have experience in delivering outdoor activity programmes which specifically target areas such as raising self-esteem, reducing stress and anxiety and building resilience. We work in partnership with MHScot Workplace Wellbeing CIC, delivering a groundbreaking workplace wellbeing programme called Thrive & Connect.

We are proud to be an inclusive provider and strive to accommodate all needs and abilities. We have a wonderful team of highly qualified outdoor professionals, who love sharing their passion for the outdoors with others.

Why: Purchasing from us will not only buy you an experience or a Workplace Wellbeing Package, it will enable us to deliver adventurous outdoor activities programmes for people would normally struggle to access them. We like to call this "Purchasing with Conscience"!

Previous clients include Baillie Gifford, East Lothian Council, Children 1st and many more.

How: claire@venturingout.org.uk



People Know How

Category: Community Organisation specialising in Digital and Social Inclusion

Who: People Know How

Where: Edinburgh & the Lothians / Scotland (Note: We are Scotland-wide in terms of campaigning, research and our national helpline, but we also deliver local services in Edinburgh & the Lothians)



What: People Know How aims to improve wellbeing across communities by supporting people to overcome barriers and thrive. We deliver services locally in Edinburgh and the Lothians and engage in research and campaigning to effect change on a national scale. We also provide a national digital support helpline. Our work supports all parts of the community including children, young people, families and adults.

Why: We deliver services locally in Edinburgh and the Lothians and engage in research and campaigning to effect change on a national scale. We also provide a national digital support helpline. Our work supports all parts of the community including children, young people, families and adults

How: contactus@peopleknowhow.org



Spark Creations

Category: Stopping Social Isolation – Branded Goods

Who: Spark Creations

Where: Based in West Lothian



What: Spark Creations is a Social Enterprise that aims to stop social isolation and loneliness, while also generating income for our charity Spark.

We prioritise making a positive impact on the local community and provide volunteer opportunities. By reinvesting our profits back into our charity, we blend financial stability with social responsibility. Our dedicated Social Enterprise and trained volunteers can personalise a wide range of goods including t-shirts, hoodies, mugs, water bottles, bags and much more.

Why: To provide volunteer opportunities for the local and wider community which helps people with skill development, social connections, personal growth, positive health benefits, a sense of purpose and finally addresses the community needs. We enrich the lives of the volunteers and the community they serve.

Previous clients include: (optional) Sky Cares, West Lothian Youth Action Project, Growing Together, Open Door, Almond Housing Association, Livingston United, Make Seconds Count, Remax, RR Flowers and Balloons, West Lothian Pride, Flosverse Techspere

How: pauline@sparkscot.com



Welcome Brain Consulting

Category: Neurodiversity, Training, Human Resources, Mental Health, Counseling/Therapy, Business Support, Employee Resilience

Who: Welcome Brain Consulting

Where: All of Scotland



What: Welcome Brain offers specialised training, consultancy, and support services designed to help organisations effectively support and manage neurodiverse employees and customers. Our neurodiversity certification program enables you to showcase your commitment to neuroinclusion to prospective clients and partners. We offer comprehensive workshops, available in both full-day and half-day formats. Additionally, we provide guidance on navigating the legal aspects of neurodiversity specific to your industry.

Why: Our approach is based on a deep understanding of neurodiversity and a commitment to delivering customised solutions. Our expertise is not just in recognizing the value of inclusivity for the neurodiverse 20% of the population, but in demonstrating how such inclusivity can elevate an organisation's productivity, recruitment processes, employee retention, and overall performance.

We provide the tools and knowledge to effect meaningful change, ensuring that inclusivity becomes a core strength of your organisation. Our approach is not about meeting minimum requirements or making superficial gestures; it's about embedding genuine, sustainable neurodiversity practices into the fabric of your organisation. This commitment to real change is why forward-thinking companies choose us.

How: info@welcomebrain.com



The Frangipane Bakery

Category: Bakery Social Enterprise

Who: The Frangipane Bakery

Where: Scottish Borders, Northumberland and the Lothians.



What: Based in the Scottish Borders The Frangipane Bakery is on a mission to spread joy through baking gluten-free products and to support people facing barriers to employment into meaningful work.

Why: We have two core beliefs here at the bakery.

People who require a gluten-free diet should be able to experience the same joy from food as everyone else.

Everyone deserves the dignity of a meaningful and worthwhile job regardless of their circumstances or background.

As a social enterprise the profits we generate from our baking go back into the community to support our social impact work. We make a variety of delicious artisan baked goods, which can be supplied on a regular wholesale basis or for one-off events.

Previous clients include: South of Scotland Enterprise, Berwickshire Housing Association, Elevator UK, Apples for Jam and Bamburgh Castle Golf Club.

How: frangipanebakes@gmail.com



Eat, Sleep, Ride, CIC

Category: Leadership, Team Building

Who: Eat, Sleep, Ride, CIC

Where: Quarry Farm, Lamberton, TD15 1XB (Scottish Borders)



What: Eat Sleep Ride is a vibrant community facility nestled on a solar-powered farm along the picturesque south-south coastline of the Scottish Borders. Our mission is deeply rooted in harnessing the serene power of nature and the intuitive wisdom of our 18-strong herd of horses to foster therapeutic, educational, and professional growth.

We offer half or full-day onsite engagements, and our unique equine-inspired leadership program is designed to enhance confidence, authenticity, and agility in leaders, preparing them to navigate through uncertainty with the finesse and intuition akin to our equine partners. Participants in our program will engage in experiential learning. This hands-on approach ensures that leaders understand and embody the principles of leading confidently in uncertain times.

Why: At the heart of their ethos is a commitment to community cohesion, providing a sanctuary where experiential learning flourishes, empowering individuals, and fortifying resilience. To be able to provide this facility, we must support it with commercial revenue streams. Choosing our services will greatly impact that Eat Sleep Ride continues to be a beacon of positive change and sustainable living.

Previous clients include Duracell, Google & Merrick.

How: eatsleepridecic@gmail.com



Hike & Bike Hub, Galashiels

Category: Active Travel / Bike Hire

Who: Hike & Bike Hub, Galashiels

Where: Galashiels and surrounding Scottish Borders



What: We are a social enterprise promoting walking and cycling for health, leisure and active travel. Hike & Bike Hub also aim to promote everyday acceptance of neurodiversity, particularly autism. The services we offer are as follows - Health walks and other guided walks starting and finishing at Hike & Bike Hub; Bike / e-bike hire; Trike / e-trike hire; Bike repairs; Bike servicing; Led cycle rides and cycle skills/maintenance sessions. Hike & Bike Hub is a "pay what you can" social enterprise, with those who can afford to pay our suggested prices for bike hire, bike servicing and led cycle rides helping to cover those costs for people who cannot.

Prior to us starting, there was no central hub dedicated to walking and cycling in Galashiels and by leasing a premises in the town centre we are contributing to the ongoing regeneration within the town.

Why: Choosing to use our services means that you are helping to support continued delivery of those services to our local community.

How: info@hikebikegalashiels.co.uk

the
**Edinburgh
Collective**

The Edinburgh Collective C.I.C.

Category: Creative Agency

Who: The Edinburgh Collective C.I.C.

Where: Edinburgh and the Lothians



What: As a creative agency, our services include private event planning and management, artist curation, strategic consulting, branding services, social media services, project management, content creation, mural and art commissions, and merchandise creation.

The Edinburgh Collective is dedicated to supporting our local creative scene and its artists. We organise fun, artistic, and inspiring events around Edinburgh that create opportunities for performance and a space for the creative community to meet.

Why: Working with us hits two birds with one stone: we provide a professional service, curating local artists and musicians for the service you need, using the profit this generates to extend our impact via our events and community projects. We hand-pick our portfolio of local creatives, considering not just their skills as a musician, band, or artist but also how professional their conduct, communication, and commitment is.

Previous clients include The Scottish Parliament, Johnnie Walker Princes Street, Fountainbridge Canalside Community Trust, Edinburgh University Student's Association and many more.

How: theedinburghcollective@gmail.com



Grassmarket Community Project & Coffee Saints

Category: Catering & Hospitality, Woodwork Commissions, Tartan Commissions.

Who: Grassmarket Community Project & Coffee Saints

Where: Edinburgh and the Lothians



What: The Grassmarket Community Project is a grassroots charity that supports some of Edinburgh's most vulnerable and marginalised adults. We try to, as much as possible fund our charity through our social enterprise activities:

A woodwork shop that makes commissioned furniture and small wooden gift items from old church pews, our two cafes - Coffee Saints, we host Events, provide hospitality and outside catering to various different organisations and we have our own Tartan that we make small gift items from as well as doing commissioned work.

Why: We work with people to help them be better versions of themselves and we do this through our number of activities that we provide, which are a mixture of educational, recreational & skill based. Over and above the activities that we provide, we also offer support & advice, sustenance and employment/work experience opportunities. By using our services, you will help us to provide food and nourishment to those suffering from poverty, support and advice to those that are struggling with trauma, employment and training opportunities.

Previous clients include Grahams Construction, Virgin Hotels, John Lewis, Edinburgh Playhouse, Baillie Gifford and many more.

How: catherine@grassmarket.org

Third Sector Interfaces

Third Sector Interfaces (TSIs) provide a single access point for support and advice for the third sector within local areas. Working with charities, social enterprises, community groups and volunteers, they aim to promote and develop a vibrant local third sector. There is a TSI in each local authority area in Scotland.

- Borders Community Action (<https://borderstsi.org.uk/>)
- Fife Voluntary Action (<https://www.fva.org/>)
- Midlothian Third Sector Interface (<https://www.thirdsectormidlothian.org.uk/>)
- SEAM Social Enterprise Alliance Midlothian (<https://www.thirdsectormidlothian.org.uk/seam/>)
- Volunteer Centre East Lothian ([Volunteer Centre East Lothian](#))
- Edinburgh Social Enterprise Network (<https://goodstuffedinburgh.co.uk/>)
- Edinburgh Voluntary Organisations' Council (<https://www.evoc.org.uk/>)
- Voluntary Sector Gateway West Lothian (<https://www.voluntarysectorgateway.org/>)

Business Gateway

Business Gateway provides free business support for anyone in Scotland.

- www.businessgatewayfife.com
- www.southofscotlandenterprise.com
- www.bgateway.com/local-offices/midlothian/your-advisers
- www.bgateway.com/local-offices/east-lothian/local-support
- www.bgateway.com/local-offices/edinburgh/programmes
- www.westlothian.gov.uk/article/34874/Starting-a-business

National Organisations

- Just Enterprise is a Scottish Government-funded programme for the Third Sector in Scotland. ([Just Enterprise -Business Support for Social Enterprises in Scotland](#))
- Firstport has been helping budding social entrepreneurs make their ideas happen for over 16 years. (<https://www.firstport.org.uk/>)
- Social Investment Scotland is a social enterprise and charity offering loan funding and business support for social enterprises, charities and community groups. (<https://www.socialinvestmentscotland.com/>)
- Social Enterprise Scotland is the national intermediary and membership organisation for social enterprise in Scotland. (<https://socialenterprise.scot/>)
- Social Enterprise Support Map offer support for social enterprises across Scotland. (<https://sesupportmap.scot/>)

With thanks to all who participated
in the creation of this document.

This product has been supported by

